

BUILDING TOGETHER BONDING FOREVER

Most Trusted Building
Material Manufacturer





VBOND's mission is to pioneer inventive solutions and cultivate environmentally conscious products, striving for industry leadership in tile and stone installation.

Our goal is to achieve excellence in customer satisfaction and service.

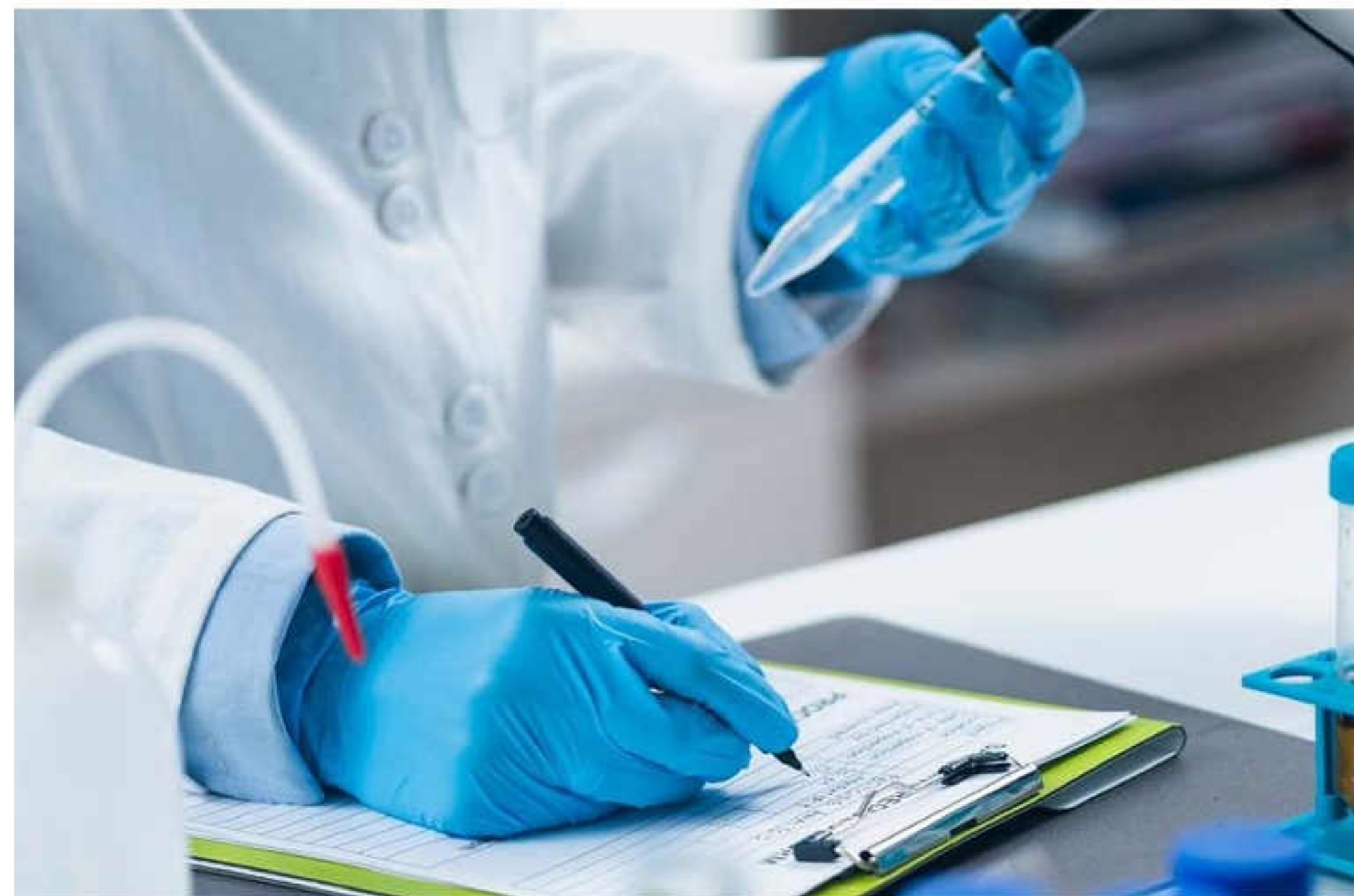


— TEAM VBOND

Production capacity:

Our current production capacity is a formidable achievement that exemplifies our unwavering dedication to meeting the ever-evolving demands of our esteemed customers, all the while upholding the paramount standards of quality & efficiency in our operations.

We have meticulously crafted this capacity to guarantee the consistent delivery of high-quality products, aligning seamlessly with the requirements of our dynamic market & the discerning preferences of our clientele.



Laboratory:

In our well-equipped laboratory, all products undergo a comprehensive and meticulous testing process before they are deemed ready for release into the market. This stringent testing regimen is an integral part of our commitment to delivering high-quality & reliable products to our customers.

Our laboratory is equipped with state-of-the-art technology & staffed by a team of experienced and skilled professionals who are dedicated to ensuring that every product meets our rigorous standards.



Man Power:

A highly skilled and proficient workforce is essential for the smooth execution of daily operations within any organization. In our commitment to maintaining a well-trained & capable manpower, we recognize the significance of continuous learning and development.



Inventory Management:

Stores typically maintain inventories of both Inward Raw Materials (RM) & Packaging Materials (PM). These inventories serve as a crucial component in the efficient operation of a company's supply chain and production processes.



FG Deliveries-FIFO:

We adhere to a First-In-First-Out (FIFO) system for the dispatch of our finished goods. This means that the products are dispatched in the order they were received, ensuring that older inventory is sent out before newer ones.



Warehouse:

A well-maintained warehouse, boasting a substantial capacity of 30,000 bags, stands ready to efficiently store and manage inventory at any given time.

WALL PRODUCTS06

SKIM COATS09

PRIMERS12

TILE & STONE ADHESIVES14

GROUTS18

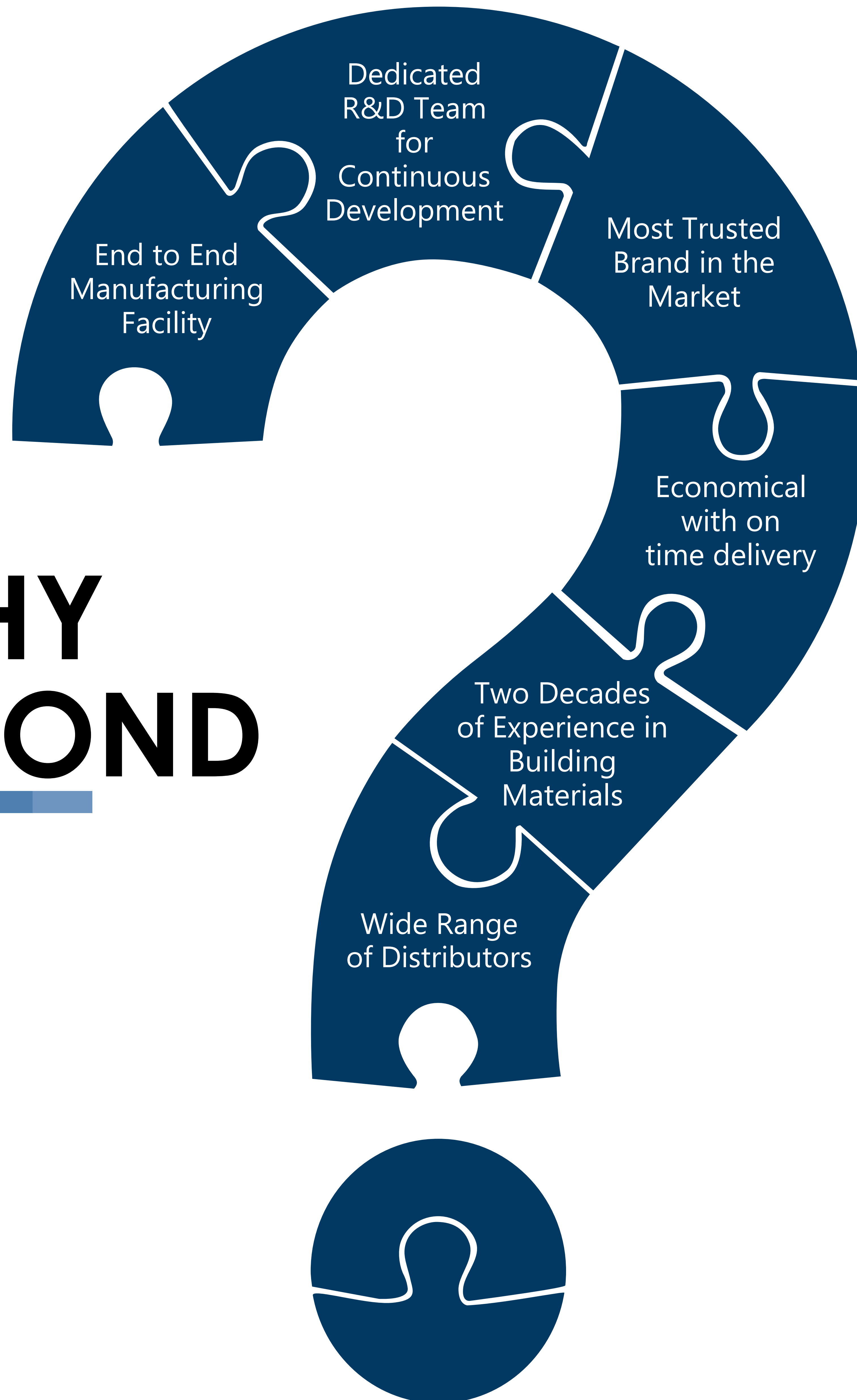
SCREED21

WATER PROOFING23

SPECIALITY PRODUCTS26

V-BOND

WHY VBOND



(Tile Adhesives)



1307 GOLD 2315 GOLD PLUS



2325 PLATINUM 3335 PLATINUM PLUS

(Skim Coats)



WALL TEXTURE



WALL CARE XPERT FINE PUTTY

(Grout)



SP GOLD 2K & RESIN KIT

(Wall Products)



DUBARA PLASTER



READY PLASTER



BLOCK JOINT

(Primers)



WATER PROOF PRIMER INTERIOR



WATER PROOF PRIMER EXTERIOR

(Screed)



SCREED-WP



AQUABOND 2K

(Water Proofing)



CON REPAIR SBR LATEX & WATER PROOF IW+



FIXTOP 666

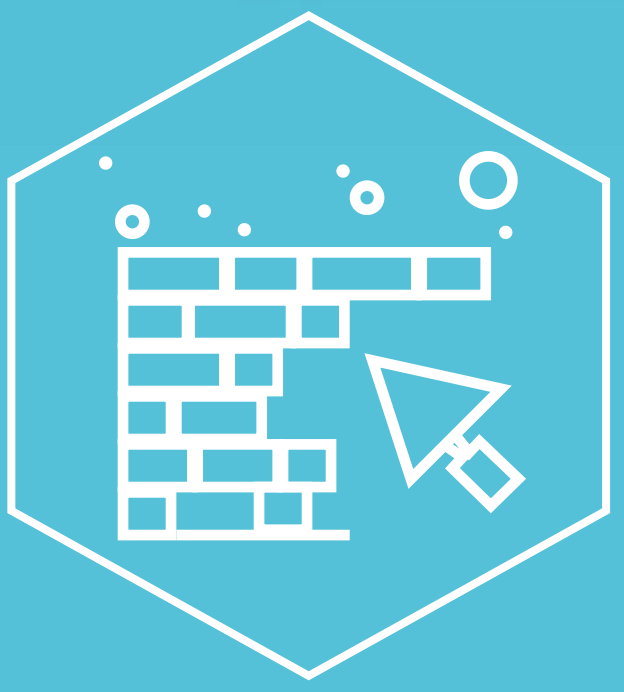
(Speciality Products)



SEALER TS



CLINO

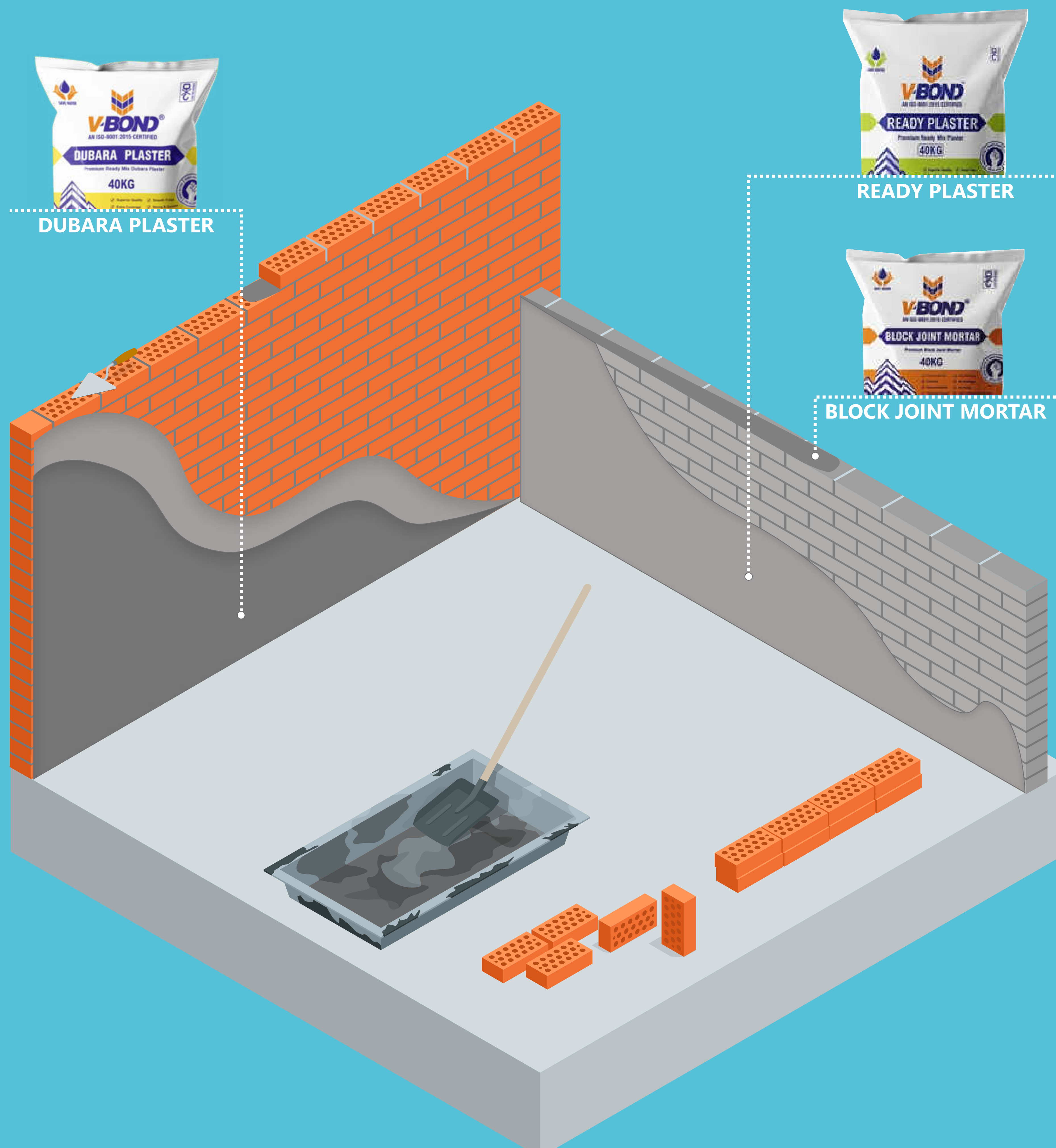


WALL PRODUCTS

VBOND's new age, polymer enhanced products manufactured in modern dry mix plant with computerised batch process. Plastering and jointing products are ready to use by just mixing water at site. This process eliminates job-site mixing practices. Hence it gives consistent quality with required sand mesh sizes in exact proportion which is most important for compactness of plaster. Further to have desired workability, less rebounding losses, required slump properties & overall durability, polymers are added.

Advantages

- No shrinking and cracking
- High quality underlayment for long-lasting tile installation.
- Self curing - saves time, costs and enables faster construction
- High strength and workability
- External and internal applications
- Materials and Coatings
- Highly durable
- Crack Free
- Temperature Variations
- Resistance to environment and temperature variations



WALL PRODUCTS

BLOCK JOINT MORTAR

VBOND Block jointing mortar is a superior water-resistant cement based mortar designed specifically for joining blocks. This mortar is specially designed & manufactured to provide superior adhesive strength, higher longevity and a strong bond between the blocks under strict quality controls. It also ensures higher bond at any thickness.

Coverage				
Block Size	4"	6"	8"	9"
No. of Blocks	85 - 95	55 - 65	45 - 55	35 - 45

Advantages:

- ◆ No curing required
- ◆ Very high adhesion strength
- ◆ Pre-mixed and ready to use
- ◆ Flexible, shock & impact resistant
- ◆ High compressive & tensile strength
- ◆ Durable, Fast & Economical
- ◆ No Wastage & Easy to use
- ◆ Seepage water percolation through joints is negligible



- ◆ **Packing:** 40 kg bag
- ◆ **Colour:** Grey 

Areas of Application:



READY PLASTER

VBOND Ready Plaster is a blend of Portland cement, finely graded sand & water soluble high-quality polymer additives in the Specified proportion. This mixture is ready to use by mixing with water at the site & can be applied on bricks, blocks, and concrete surfaces.

Coverage				
Thickness	6 mm	8 mm	10 mm	12
Sq.ft	30 - 36	24 - 28	18 - 20	16 - 18

Advantages:

- ◆ An alternative for traditional plastering
- ◆ Consistent, high-quality, & smooth finish.
- ◆ Reduced water absorption, increased durability.
- ◆ Easy to apply & faster completion of work
- ◆ No wastage & no rebounding losses
- ◆ Reduce Construction Costing
- ◆ Very minimal curing required
- ◆ Durable, Fast & Economical



- ◆ **Packing:** 40 kg bag
- ◆ **Colour:** Grey 

Areas of Application:



WALL PRODUCTS

DUBARA PLASTER

Dubara Plaster is a specially formulated blend of Portland cement, fine graded sand, and water-soluble, high-quality polymer additives, precisely proportioned to create a versatile & ready-to-use mixture. With its simple preparation process, it can be easily mixed with water on-site, making it ideal for applying as a second Coat on bricks, blocks, and concrete surfaces.

Coverage

140 - 160 Sq.ft/ 40 Kg Bag



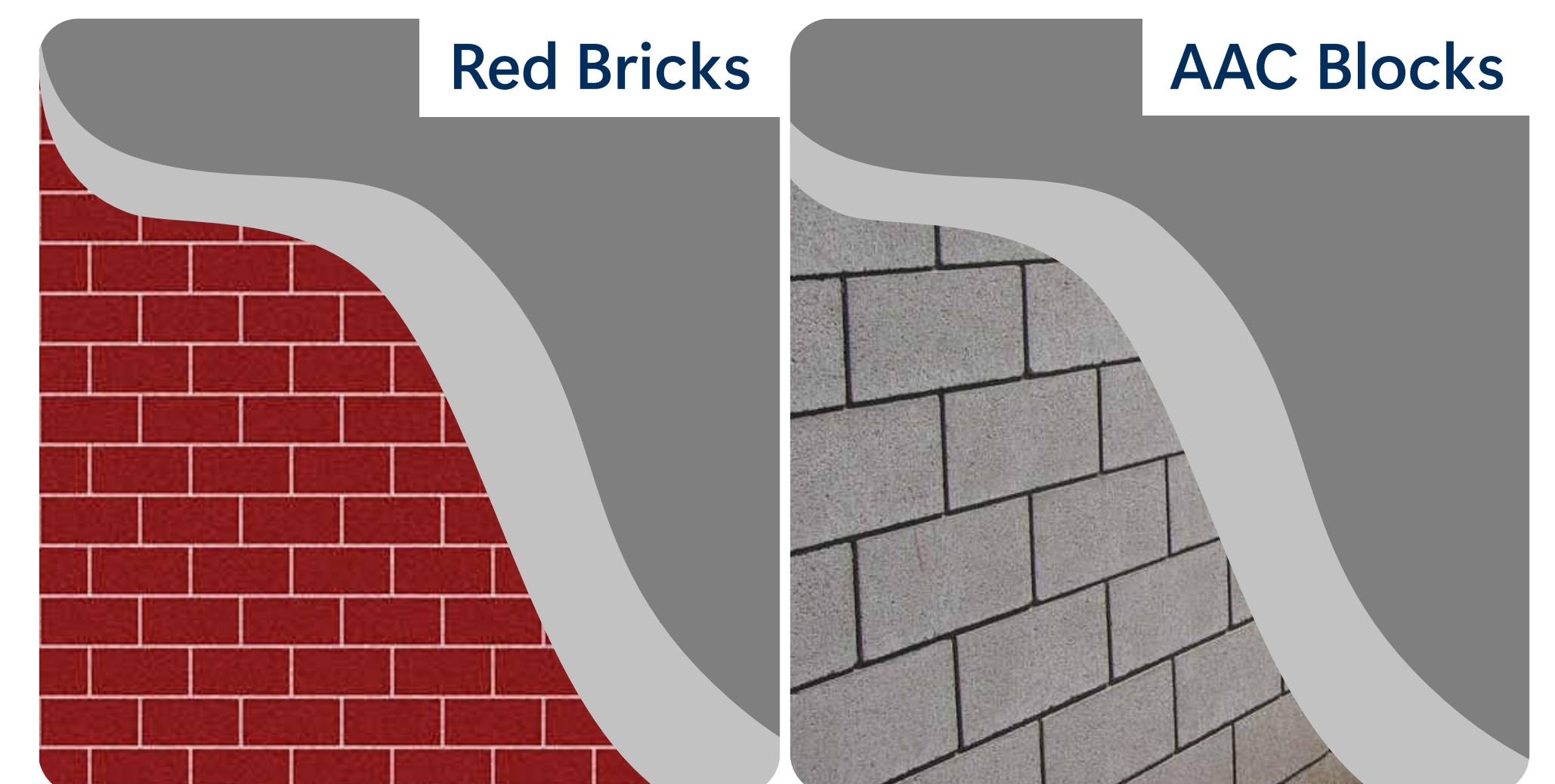
Advantages:

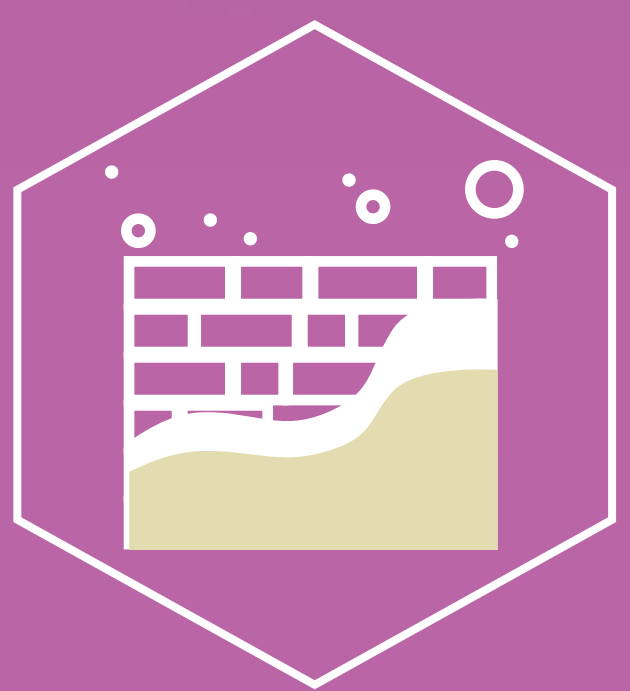
- ✦ Used in place of traditional plastering
- ✦ Consistent, high-quality, & smooth finish.
- ✦ Reduced water absorption, increased durability.
- ✦ Easy to apply & faster completion of work
- ✦ No wastage & no rebounding losses
- ✦ Reduce Construction Costing
- ✦ Very minimal curing required
- ✦ Durable, Fast & Economical

✦ **Packing:** 40 kg bag

✦ **Colour:** Grey 

Areas of Application:





SKIM COATS

VBOND Skim Coats, a versatile building material, consist of a carefully curated blend of high-quality components, including White Cement, Polymers, & Special Grade minerals. This unique composition endows them with a wide range of applications & benefits that make them ideal for both indoor and outdoor surfaces. This seamless finish not only enhances the aesthetics of the surface but also serves as a canvas for creative expression, allowing paint to adhere beautifully and showcase its true colors.

Advantages

- White & Smooth Finish.
- Excellent Workability.
- Water-Resistant.
- Superior Bonding.
- Higher Coverage.
- Good Breathability.
- Does not allow paint to flake.
- Ideal for interior & exterior walls.
- Enhanced Aesthetics
- Cost-Effective
- Skim coating can be used on a variety of surfaces, including drywall, plaster, concrete, and more.



WALL TEXTURE



WALL CARE
XPRT COARSE



WALL CARE
XPRT FINE PUTTY



SKIM COATS

WALL CARE XPERT FINE PUTTY

VBOND Premium Wall Xpert Putty is a versatile & top-tier construction material meticulously crafted to meet your exacting needs. This exceptional product represents a harmonious fusion of three essential components: White Cement, premium-grade Polymers, and Special Grade minerals.

Coverage

400 - 450 sft/40kg bag – 2 Coats

Advantages:

- ◆ White & levelled surface
- ◆ Water-Resistant & Superior Bonding
- ◆ Higher Coverage
- ◆ Good Breathability
- ◆ Easy Maintenance
- ◆ Does not allow Fine Finish to flake
- ◆ Ideal for interior & exterior walls
- ◆ Long-lasting Durability



- ◆ **Packing:** 40 kg bag
- ◆ **Colour:** White ☐

Areas of Application:



WALL CARE XPERT COARSE

VBOND Coarse Putty is a premium construction material crafted from a base of white cement, tailored specifically for enhancing the quality of plastered or concrete walls and ceilings.

Coverage

140 Sq.ft/ 40 Kg Bag - 1 Coat

Advantages:

- ◆ White & levelled surface & Good Breathability
- ◆ Covers all Undulations
- ◆ Water Resistant & Superior Bonding Higher
- ◆ Ideal for interior & exterior walls
- ◆ Max application thickness in Single Coat - 15 mm
- ◆ Does not allow Fine Finish to flake
- ◆ Provides Long-Lasting Protection



- ◆ **Packing:** 40 kg bag
- ◆ **Colour:** White ☐ Grey ☒

Areas of Application:



SKIM COATS

WALL TEXTURE

VBOND Wall Textures, a unique concept in wall coverings, that combines textures and colors to create an exciting alternative to Wall paper, Tiles & other coatings. Available in two variants -Natural Grit finish (Two Component : 25 + 5 Kg) and Designer Textures (25 Kg). With VBOND Wall Textures, you can elevate the aesthetic appeal of your living spaces in a way that's both artistic and functional.

Coverage

140 Sq.ft/ 40 Kg Bag - 1 Coat

Advantages:

- ◆ White & levelled surface & Good Breathability
- ◆ Water-Resistant & Superior Bonding
- ◆ Cover all undulations
- ◆ Does not allow fine finish to flake
- ◆ Max application thickness in single coat-15 mm
- ◆ Ideal for interior & exterior walls
- ◆ Resistance to Fading
- ◆ Long-lasting Durability



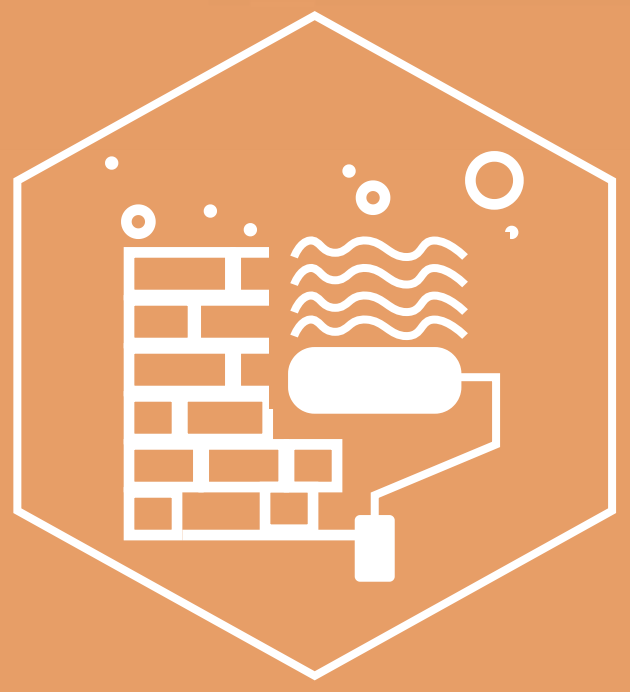
WALL TEXTURE (FINE & REGULAR & JUMBO)

◆ **Packing:** 25 kg bag

◆ **Colour:** Cream 

Areas of Application:





PRIMERS & PAINTS

VBOND Skim Coats, a versatile building material, consist of a carefully curated blend of high-quality components, including White Cement, Polymers, & Special Grade minerals. This unique composition endows them with a wide range of applications & benefits that make them ideal for both indoor and outdoor surfaces. This seamless finish not only enhances the aesthetics of the surface but also serves as a canvas for creative expression, allowing paint to adhere beautifully and showcase its true colors.

Advantages

- Does not require curing with water
- Excellent opacity and whiteness
- Improves appearance of top coat
- Prevents peeling off finished coat
- Reduced Environmental Impact
- Enhanced Durability
- Compatibility with Various Surfaces
- Reduced Maintenance
- Enhanced Aesthetic Qualities
- Quick Drying
- Cost-Effective



PRIMERS & PAINTS

WATER PROOF PRIMER INTERIOR

A waterproofing primer serves a multifaceted role in the process of protecting surfaces from water damage and Enhancing the longevity of coatings. Its primary purpose is to create a comprehensive barrier, guaranteeing that the underlying substrate is completely sealed and adequately prepared to accept subsequent coatings.

Coverage

100-120 Sq.ft/Ltr

Advantages:

- Does not require curing with water
- Excellent opacity and whiteness
- Improves appearance of top coat
- Prevents peeling off from Substrate
- Ideal for interior
- Enhanced Aesthetics
- Improved Print Quality
- Reduced Ink Consumption



WATER PROOF PRIMER INTERIOR

- Packing:** 20 Ltrs Bucket
- Colour:** White ☐

Areas of Application:



WATER PROOF PRIMER EXTERIOR

VBOND Ready Plaster is a blend of Portland cement, finely graded sand & water soluble high-quality polymer additives in the Specified proportion. This mixture is ready to use by mixing with water at the site & can be applied on bricks, blocks, and concrete surfaces.

Coverage

Plain Walls	80-100 Sq.ft/Ltr
Textured Walls	50-60 Sq.ft/Ltr

Advantages:

- Does not require curing
- Excellent opacity and whiteness
- Prevents peeling off from Substrate
- Withstands exterior weather conditions
- Durability & Thermal Stability
- Superior Whiteness
- Environmental Considerations
- Non-Fading Colors



WATER PROOF PRIMER EXTERIOR

- Packing:** 20 Ltrs Bucket
- Colour:** White ☐

Areas of Application:





TILE & STONE ADHESIVES

VBOND'S range of advanced polymer tile adhesives. Far superior to conventional methods, these tile adhesives break the shackles imposed on your creativity by allowing you to experiment with aesthetics. For instance, you can now even think of fixing a marble slab on the wall, floor and elevation! Finally, today's construction needs have met their match in VBOND adhesives.

Advantages

- Self curing adhesive
- Easy to Mix & Easy to use
- Flexible
- Shock & Impact resistant
- Fast & Economical
- High Bond Strength
- Water Resistant
- Temperature Tolerance
- Minimal Equipment Needed
- Environmental Considerations
- Excellent Gap-Filling Properties





Most Trusted Tile & Stone Adhesives Awarded by Times Group



TILE & STONE ADHESIVES

GOLD - 1307

VFIX-GOLD Premium Tile Adhesive (Type-1) is a cutting-edge solution for all your tile fixing needs. This exceptional product is a single-component, hassle-free thin-bed tile adhesive that stands out in the world of construction materials. Crafted with precision, it is a cement-based polymer-modified dry mix mortar, designed to cater to the diverse requirements of tile installations.

Coverage

55-60 sq. ft. Per 20 kg Bag with 6 mm x 6 mm Notch Trowel –Vary with Size and type of tile

Advantages:

- Self-curing & easy to use
- Flexible* & Medium Bond strength
- Can be used for interior application n floor & walls
- Can be used on masonry, concrete Cement plaster
- Ideal for ceramic tiles
- Fire Resistance
- Stability and Load-Bearing Capacity
- Long-lasting Durability



◆ **Packing:** 20 kg Bag

◆ **Colour:** White ☐ Grey ☒

Areas of Application:



GOLD PLUS - 2315

VFIX-GOLD Plus extra premium tile adhesive (Type-2) represents an advanced solution in the realm of tile adhesives. It stands out as a single-component thin bed tile adhesive, meticulously formulated to provide unparalleled convenience and performance.

Coverage

55-60 sq. ft. Per 20 kg Bag with 6 mm x 6 mm Notch Trowel –Vary with Size and type of tile

Advantages:

- Self-curing easy to use thin bed tile adhesive
- Flexible* & High Bond strength
- Can be used for wet areas
- Can be used for interior & Exterior applications
- Can be used on floors & walls
- Can be used on masonry, concrete & cement plaster
- Fire Resistance
- Stability and Load-Bearing Capacity



◆ **Packing:** 20 kg Bag

◆ **Colour:** White ☐ Grey ☒

Areas of Application:



TILE & STONE ADHESIVES

PLATINUM - 3325

Tile Adhesive Type-3 for Tiles is dry mix mortar for fixing various types of tiles & stones for floor, wall and counter tops. Specially designed for heavy duty application for fixing variety of tiles on internal vertical and horizontal surfaces.

Coverage

55-60 sq. ft. Per 20 kg Bag with 6 mm x 6 mm Notch Trowel –Vary with Size and type of tile

Advantages:

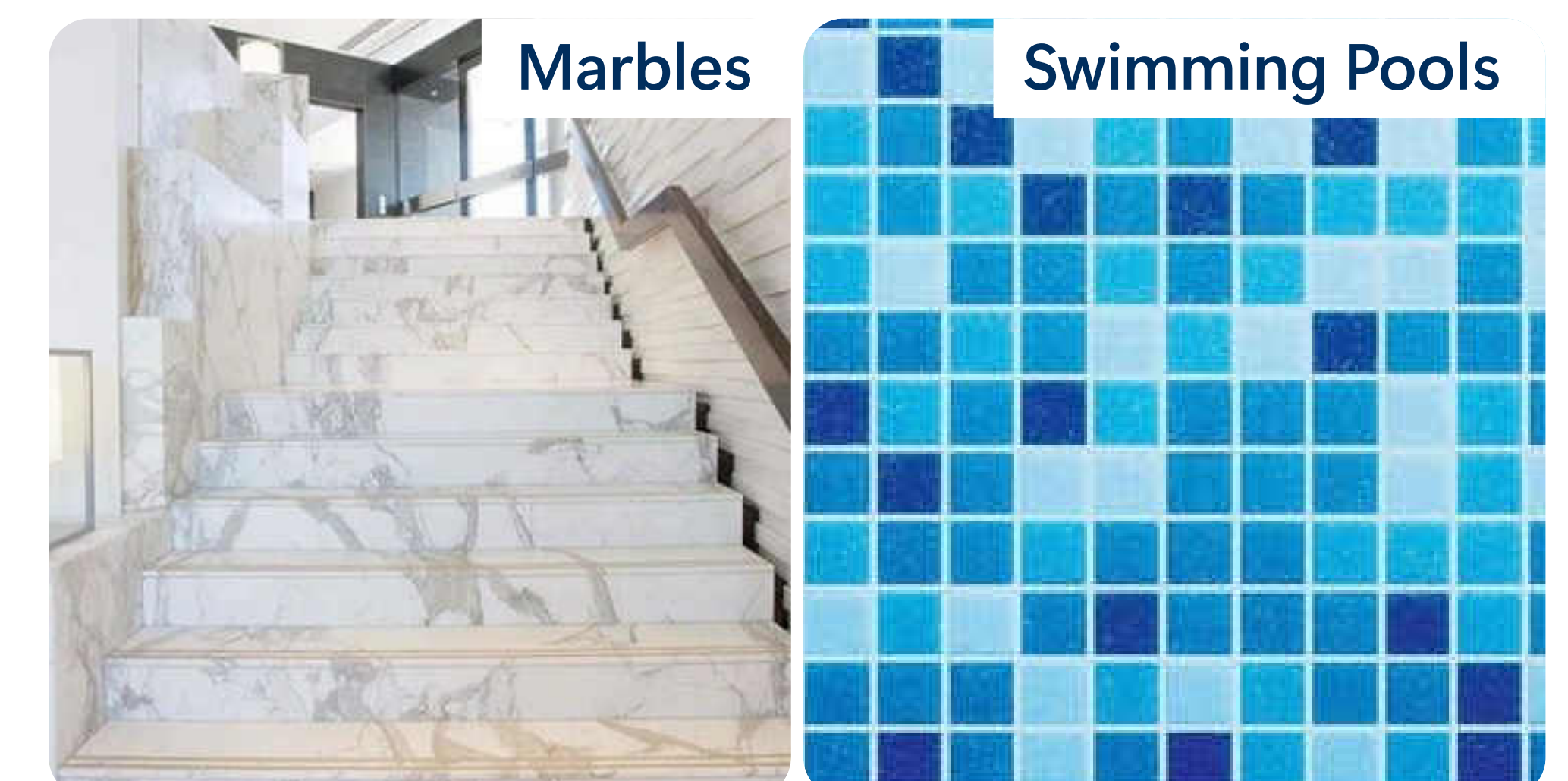
- ◆ Self curing adhesive & Easy to use
- ◆ Ideal for large format tiles & stones
- ◆ Suitable for Natural, Italian, Marbles & Granites
- ◆ Flexible, Shock & Impact resistant
- ◆ Fast & Economical
- ◆ Self curing adhesive & Easy to use
- ◆ Can be used for Wash, Wet areas like Kitchens, counters & swimming pools.



◆ **Packing:** 20 kg Bag

◆ **Colour:** White ☐ Grey ☒

Areas of Application:



PLATINUM PLUS - 3335

The ultimate Type - 3 Super Flex Floor and all Adhesive, meeting top industry standards. Perfect for large format tiles, indoors & outdoors, offering strength, flexibility, and underwater shear bond capability. Ideal for ceramic tiles, mosaics, and natural stones on various surfaces, ensuring excellence in every application.

Coverage

55-60 sq. ft. Per 20 kg Bag with 6 mm x 6 mm Notch Trowel –Vary with Size and type of tile

Advantages:

- ◆ Strength and Durability
- ◆ Underwater Shear Bond Capability
- ◆ Versatile Compatibility
- ◆ Excellence in Every Application
- ◆ Flexibility
- ◆ Self curing adhesive & Easy to use
- ◆ Longevity



◆ **Packing:** 20 kg Bag

◆ **Colour:** Multi colour 

Areas of Application:



TILE & STONE ADHESIVES

PLATINIUM SUPER - 3335

Type 4: A high-performance one-component adhesive with exceptional polymer strength, suitable for indoor and outdoor installations of large format tiles. It bonds ceramics, glass mosaics, stones, and more, even underwater. It excels in various applications, including wet environments like pools and saunas, making it ideal for both new installations and adding layers to existing tiles.

Coverage

55-60 sq. ft. Per 20 kg Bag with 6 mm x 6 mm Notch Trowel –Vary with Size and type of tile

Advantages:

- ◆ Exceptional Polymer Strength
- ◆ Versatile Compatibility
- ◆ Underwater Bonding
- ◆ Suitable for Wet Environments
- ◆ High-Performance
- ◆ Self curing adhesive & Easy to use
- ◆ Indoor and Outdoor Use



◆ **Packing:** 20 kg Bag

◆ **Colour:** White ☐ Grey ☒

Areas of Application:



PLATINIUM PUA - 4212

PLATINIUM PUA-4212 A top-notch two-component adhesive for easy installation of various materials like ceramic tile, vitrified tile, metal tile, glass tile, agglomerates, glass mosaic tile, and natural stone. Exceptional performance guaranteed.

Coverage

10 Sq.ft Per 4kg Bucket for 3mm Thickness

Advantages:

- ◆ Highly flexible & superior bond strength
- ◆ Suitable for all the substrates including metal
- ◆ Ideal for agglomerates & moisture sensitive tiles/stones
- ◆ Enhanced Durability
- ◆ Good for vertical applications
- ◆ Reduced Maintenance Costs
- ◆ High-Temperature Tolerance
- ◆ Reduced Noise and Vibration



◆ **Packing:** 4 kg Bucket

◆ **Colour:** Off White ☐

Areas of Application:





GROUTS

VBOND recognizes the critical importance of using grout when laying tiles. Neglecting to employ grout in tile installation can result in a multitude of problems, spanning from minor inconveniences to severe structural issues. These problems encompass chipped corners, water seepage, unsightly staining, the potential for fungus growth, and even the catastrophic scenario of tiles debonding and falling off. The consequences of omitting grout in tile projects can be wide-ranging and highly detrimental.

Advantages

- Stain free
- Acid/chemical resistant
- Non-cracking/powdering
- Anti-fungal and anti-bacteria
- Easy application
- Available in a variety of shades
- Resistant to Wear and Tear
- Easy to Clean
- Low Maintenance
- Durability

MIX RATIO : VEPOXY - SP GOLD 3K

PART A	PART B
90 GMS	960 GMS
1	10.6

MIX RATIO : VEPOXY - SP GOLD 2K

HARDNER	RESIGN	FILLER POWER
90 GMS	210 GMS	750 GMS
1	2.3	8.3

Colours:

- 01 Bright White
- 02 Silk
- 03 Sauterne
- 04 Almond
- 05 Spectra Pink
- 06 Dusty Rose
- 07 Mayan Red
- 08 Burgundy
- 09 Mocha
- 10 Sand Stone
- 11 Sable



- 12 Smoke Grey
- 13 Silver Shadow
- 14 Slate Grey
- 15 Platinum
- 16 Raven
- 17 Midnight Black
- 18 Sky Blue
- 19 Alpine Blue
- 20 Marble Beige
- 21 Hemp
- 22 IVY

UNLIMITED COLOURS WITH MULTI SHADES IN EPOXY COLOUR*

GROUTS

VEPOXY - SP GOLD 3K

Epoxy Tile Grout is a highly effective & versatile grouting material, composed of three essential components: resin, hardener, & filler powder, where the filler powder serves as the color component. This unique tricomponent formulation is specifically designed to offer exceptional performance & durability when used to seal & fill the gaps between tiles.

Coverage						
Tile Size	600*600* 8mm	300*300* 6mm	300*200* 6mm	200*150* 5m	150*150* 4mm	100*100* 3mm
Coverage for 2MM Joint	120	80	65	55	61	55

Advantages:

- For tile joints having flesh joint from 2-6 mm
- Smooth finish
- Stain free & Easy to clean
- Chemical & Acid Resistant
- Aesthetic Appeal
- Versatility & Durability
- Low Maintenance
- Anti-fungal and anti-bacteria



- Packing:** 1 kg - Pail & 5 kg - Bucket
- Colour:** Color customization is available.*

Areas of Application:



VEPOXY - SP GOLD 2K

Take your tiling endeavors to new heights by incorporating our meticulously engineered Vepoxy grout. This innovative grouting solution is designed to elevate both the visual appeal and functionality of your projects, offering compatibility with a wide array of tile types.

Coverage						
Tile Size	600*600* 8mm	300*300* 6mm	300*200* 6mm	200*150* 5m	150*150* 4mm	100*100* 3mm
Coverage for 2MM Joint	120	80	65	55	61	55

Advantages:

- For tile joints having flesh joint from 2-6 mm
- Anti Fungal & Anti Bacterial
- Stain free & Easy to clean
- Non-Shrinkage, Non-Cracking and Non-Powdering
- Versatility & Durability
- Increased Tile Visibility
- Low Maintenance
- Anti-fungal and anti-bacteria



- Packing:** 2 kg Pail & 5 kg Bucket
- Colour:** Color customization is available.*

Areas of Application:



GROUTS

UNSANDED GROUTS

VBOND Unsanded Grout is a premium formulation comprising Portland cement, advanced polymers, special grade minerals. It is expertly crafted for use with Bond Grout Admix Plus, particularly in narrow joints up to 3mm wide. This grout excels at grouting porous & absorbent tiles, delivering a flawless final result thanks to its exceptional compatibility.

Recommendation

Recommended to add admix grout instead of water for better performance.

Advantages:

- ◆ Exceptional Color Retention
- ◆ Smooth finish & Zero Shrinkage
- ◆ Crack & Water resistant*
- ◆ User-Friendly Application
- ◆ Customized colours will be supplied on demand
- ◆ Clings well to the vertical surfaces
- ◆ USG for 0-6 mm & > 6mm Sanded Grouts available
- ◆ Diverse Color Palette



- ◆ **Packing:** 1 kg/(1kg x 10 Numbers) Carton
- ◆ **Colour:** Color customization is available.

Areas of Application:



GROUT ADMIXTURE

Take your tiling endeavors to new heights by incorporating our meticulously engineered Vepoxy grout. This innovative grouting solution is designed to elevate both the visual appeal and functionality of your projects, offering compatibility with a wide array of tile types.

Dosage

400ml per 1 kg of UnSanded Grouts.
200ml for 1 kg of Sanded Grouts.

Advantages:

- ◆ Color Fastener & Lasting Color Brilliance
- ◆ Effortless Application & Cleanup
- ◆ Non-cracking and non-shrinking
- ◆ Water and Shock Resilience
- ◆ Enhanced Flexibility & Durability
- ◆ Provides more dense & stronger grout joint
- ◆ Reduce staining & water absorption
- ◆ Inhibits - Stain causing bacteria



- ◆ **Packing:** 400 ml

Areas of Application:





SCREEDS

VBOND's innovative polymer-enhanced screed represents a groundbreaking evolution in the realm of construction materials. This advanced product, a fusion of traditional engineering principles and cutting-edge polymer technology, stands as a testament to the company's commitment to delivering excellence in construction solutions. This high-tech screed, meticulously crafted to perfection, serves as the foundational cornerstone for any tiling or stone installation project.

Advantages

- High quality underlayment for long-lasting tile installation.
- Self curing - saves time, costs and enables faster construction
- No shrinking and cracking
- High strength and workability
- External and internal applications
- Resistance to environment and temperature variations
- Highly durable
- Moisture Resistance
- Durability and Longevity



SCREED-WP

Terrace

Balcony

Swimming Pool



SCREEDS

SCREED WP

The New Age Enhanced Screed is a cutting-edge construction material designed for superior tile and stone foundations. It combines cement, engineered sand, advanced polymers, and durable fibers to deliver outstanding results.

Recommendation

Screed WP is used for both new estates and upgrading estates wet areas like kitchens, toilets, balconies and roof tops.



Advantages:

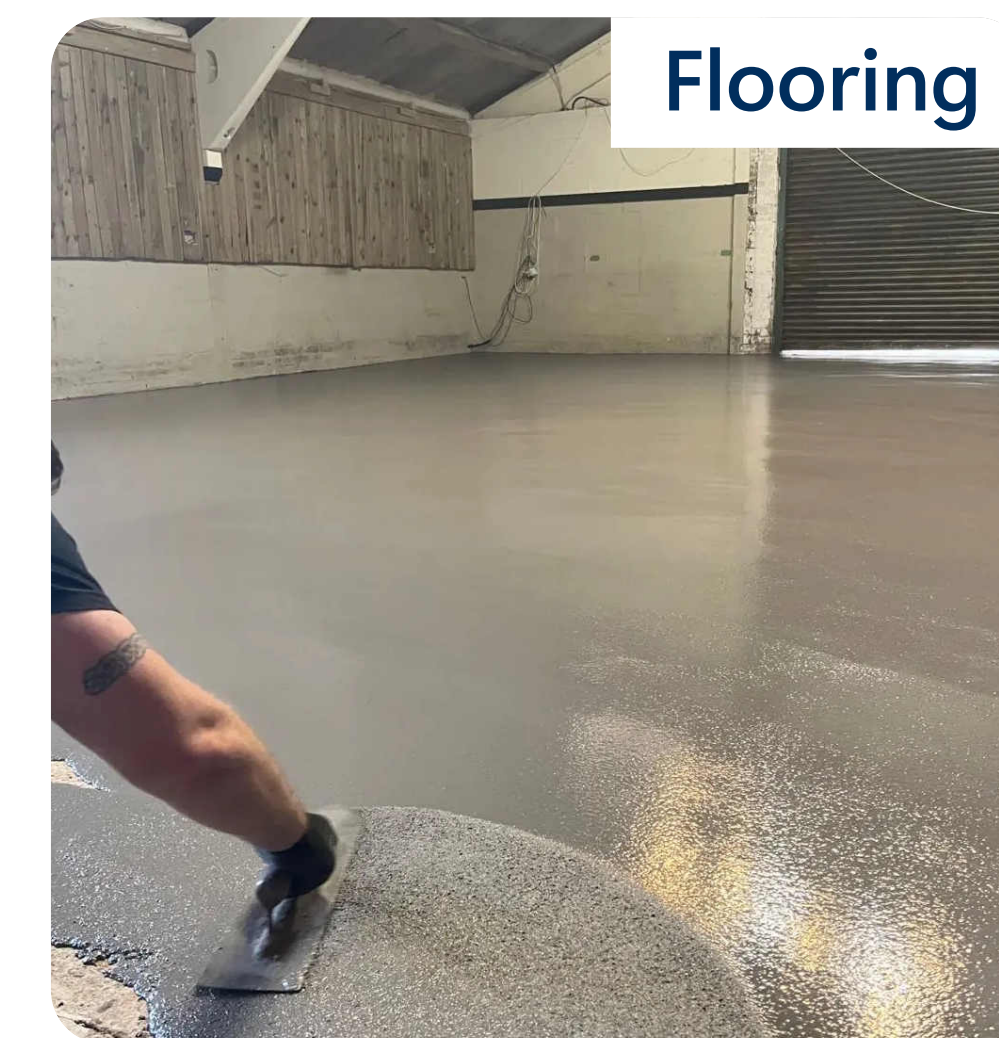
- ◆ Industrial buildings, Residential and commercial buildings
- ◆ Water retaining & self-curing
- ◆ Non-Shrink & free from Crack
- ◆ High strength
- ◆ Easy to use Screed repairing
- ◆ Interior & Exterior Applications
- ◆ Smooth Surface Preparation
- ◆ Fire Resistance

◆ **Packing:** 40 kg Bag

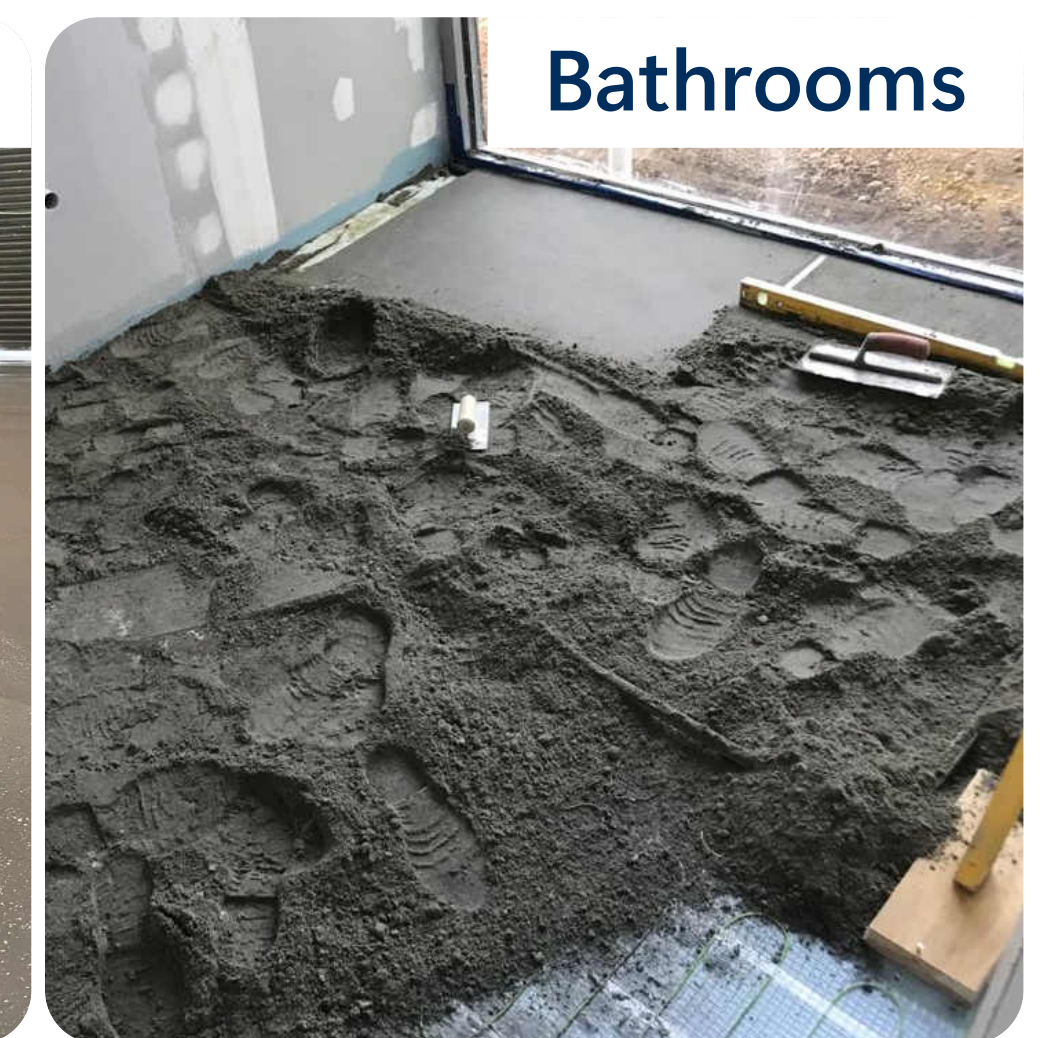
◆ **Colour:** Grey 

Screed filler also available.

Areas of Application:



Flooring



Bathrooms





WATER PROOFING

VBOND's waterproofing is a comprehensive procedure employed to render an object or structure impervious to water, ensuring it remains mostly impervious to water infiltration or resistant to the detrimental effects of moisture. This application is highly recommended for implementation in a wide array of cement-based constructions and projects. Waterproofing is vital for safeguarding a wide range of structures, from homes and businesses to infrastructure like bridges, tunnels, and dams.

Advantages

- Easy to apply
- Higher working time
- Suitable for any substrate
- Wide range for diverse applications
- Minimal environmental impact
- Enhanced durability
- High-quality results
- Highly durable & Easy maintenance
- Moisture Resistance
- Versatile and Longevity



AQUABOND 2K



CON REPAIR SBR LATEX &
WATER PROOF IW+



WATER PROOFING

WATER PROOF IW+

WATERPROOF IW+ is specially formulated integral liquid waterproofing compound composed of surface-active plasticizing agents, polymers & additives. It is used as an additive for cement concrete, mortar & plasters. It makes concrete cohesive and prevents segregation.

Dosage

100ml of IW+ to be added for every 50kg of cement.

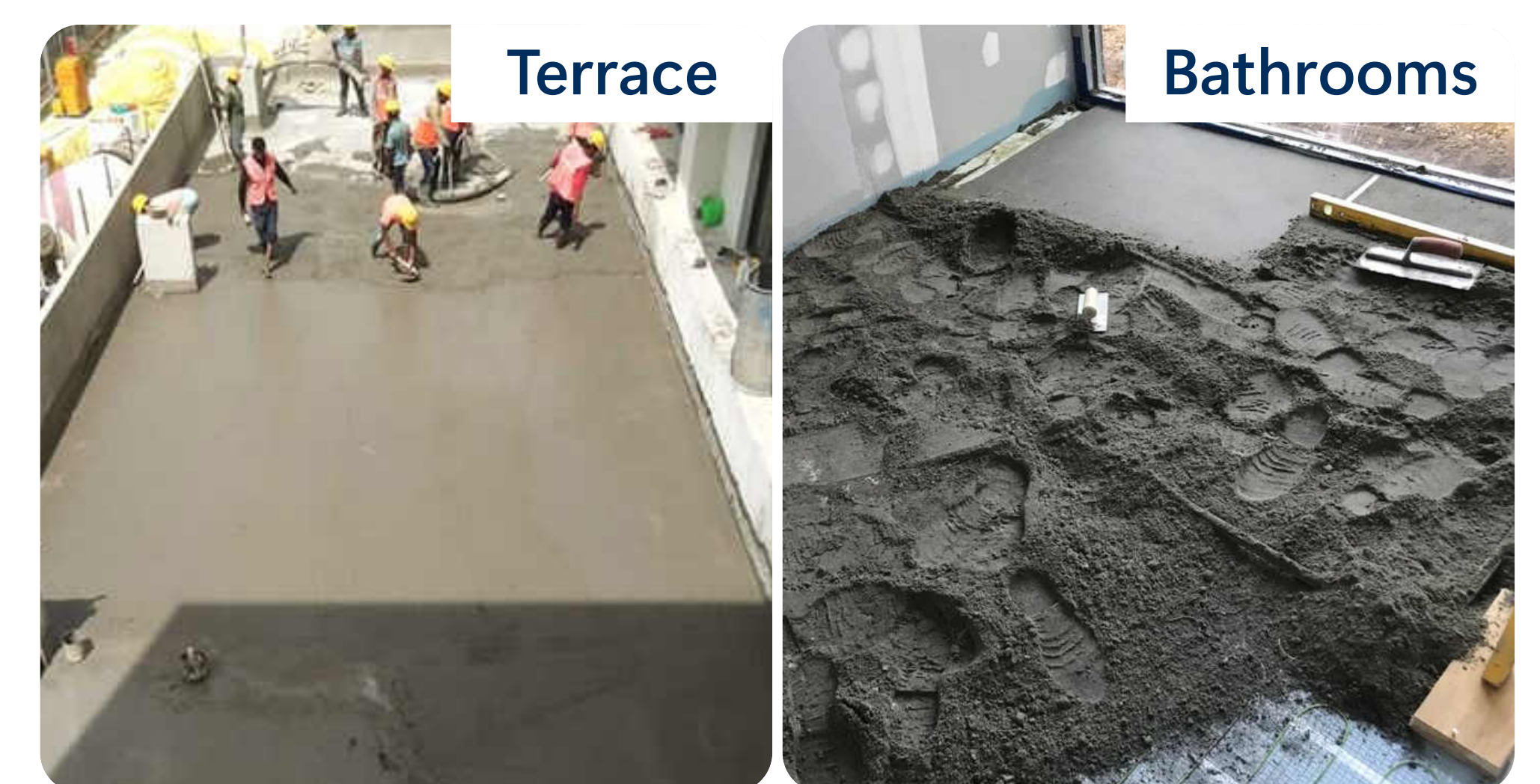
Advantages:

- Corrosion-resistant - Makes concrete more cohesive, hence protects steel better against corrosion
- Compatibility-Being a liquid, easily dispersible & compatible with concrete/mortar mixes.
- Permeability – It reduces the permeability of water into concrete.
- Shrinkage – Reduces shrinkage crack development in plaster & concrete.
- Workability – Improves the workability of freshly mixed cement concrete.
- Durability – Increases durability by improving the waterproofing of concrete.



- Packing:** 400ml/1Ltr/ 5Ltrs/ 20Ltrs
- Dosage:** 100ml/ 50 kg cement bag

Areas of Application:



CONREPAIR SBR-LATEX

Con Repair SBR Latex is an innovative solution designed for various construction applications. It's a modified styrene butadiene emulsion that excels as a bonding agent & gauging liquid in cementitious systems. Explore its outstanding features and uses.

Coverage

43-53 sft per ltr

Advantages:

- Simple to use - Single component, gauged as required.
- Provides weather resistant mortar with improved durability
- Provides waterproof screeds, plasters & Mortars
- Enhanced Strength
- Improved tensile and flexural properties
- Water Resistance
- Flexibility and Durability
- Ease of Application



- Packing:** 1Ltr/ 5Ltrs/ 20Ltrs

Areas of Application:



WATER PROOFING

AQUABOND 2K

AQUABOND 2K is an acrylic cementitious, polymer modified elastomeric, water proofing & protective coating composed of best quality Portland cement, properly selected & graded aggregates, additives & acrylic emulsion polymer as a binder. It is applied to waterproof and protect concrete and masonry substrates.

Coverage	Mix Ratio	
108-195 sft per kg	Liquid	Powder
	1	3

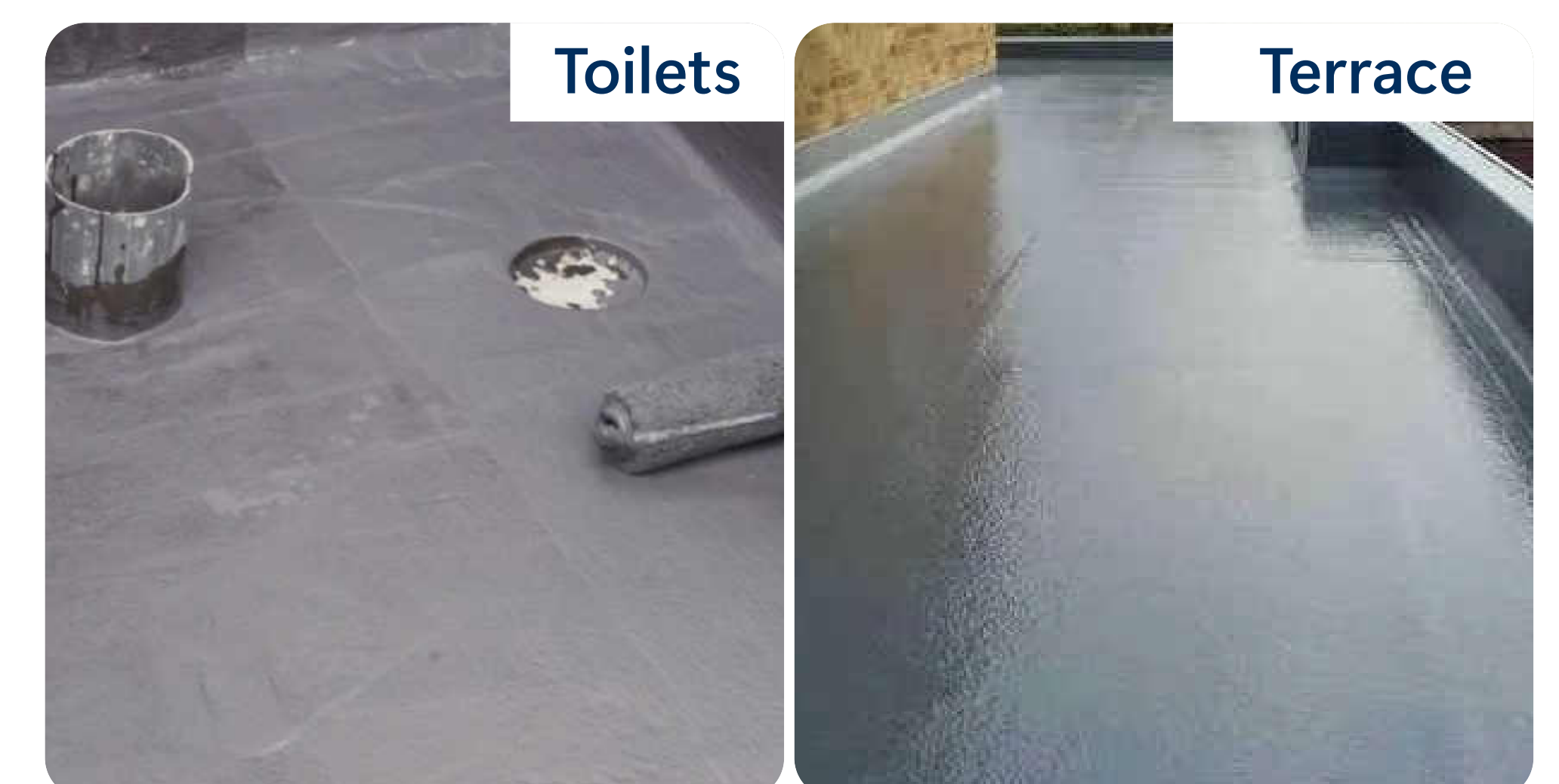


Advantages:

- Protects concrete and prevent water leakage
- Gives excellent waterproofing & UV resistance
- Excellent adhesion to concrete and masonry
- Enhanced Structural Integrity
- High Performance
- Elastomeric flexible coating
- Eco-friendly - Non-toxic with low
- Ease of Application

- Packing:** 20 kg kit(5 kg liquid, 15 kg dry mix mortar)

Areas of Application:



SPECIALITY PRODUCTS

GROUT 700 NS

This material is commonly employed to address the issue of shrinkage that may occur when filling the entire empty space between a base plate and a substrate. Moreover, it finds versatile applications in securing a wide variety of fastenings.

Recommendation

GROUT 700 NS is supplied as a ready to use dry powder. The addition of a controlled amount of clean water produces a free flowing, non-shrink grout for gap thicknesses up to 100mm.

Advantages:

- ◆ Ready to use & easy to mix
- ◆ Consistency can be adjusted
- ◆ Free flowing nature
- ◆ Early strength setting & High durability
- ◆ Effective Shrinkage Prevention
- ◆ Ease of Application
- ◆ Impact & vibration resistant
- ◆ Non shrink & non corrosive



◆ **Packing:** 25 Kg

Areas of Application:



FIXTOP 666

Fixtop 666 is a versatile & highly effective pre-blended cementitious floor hardener designed to enhance the durability & resilience of freshly poured concrete surfaces. This innovative product comprises a well-graded mixture of metallic & non-metallic particles carefully combined to deliver exceptional performance.

Coverage

3-5 kg/m² for medium traffic
5-7 kg/m² for heavy traffic

Advantages:

- ◆ It provides a hard-wearing surface
- ◆ It is chloride free and hence does not result in corrosion of metals
- ◆ It increases abrasion resistance
- ◆ It provides a non-slip surface
- ◆ Enhanced Durability
- ◆ Non corrosive, less water absorption, has increased resistant to oil & grease
- ◆ Easy simple and economical in the application
- ◆ Quick and Easy Application



◆ **Packing:** 25 Kg

Areas of Application:



SPECIALITY PRODUCTS

MICRO MIX

Micro Mix is a ready-to-use dry powder that, when mixed with clean water on-site, produces a free-flowing, non-shrink repair micro - concrete. It's UV - resistant and crack-resistant, thanks to its acrylic emulsion base. When applied, it enhances the bond with masonry/cement and improves mortar's tensile and flexural strength.

Recommendation

Micro Mix can be used in areas where the steel pillars are exposed in concrete slabs.

Advantages:

- ◆ Form hard, tough abrasion resistant coating
- ◆ Bonds strongly to concrete
- ◆ Has a non-shrink property
- ◆ Easy to mix
- ◆ Makes repaired section highly durable
- ◆ Quality Assurance
- ◆ Flow able mortar hence does not require compaction
- ◆ Develop high initial and ultimate final strengths



◆ **Packing:** 25 Kg

Areas of Application:



SEALER TS

Sealer TS is an innovative and highly effective solution for protecting a wide range of surfaces. This transparent, penetrating sealer has been engineered to provide a powerful, invisible shield against the elements, particularly water & stains. Its versatility and excellent performance make it an ideal choice for a wide range of materials, such as ceramic, marble, brick and mortar joints.

Coverage

3-4.5 m²/L vertical concrete surface
3 m²/L for lateral concrete surface 1-2 hours

Advantages:

- ◆ A stain proof product which is mild penetrating sealer.
- ◆ SEALER-T is a non-flammable solution
- ◆ Weather resistant-protects stone, brick and tile.
- ◆ Easy to apply-no special tools required and low VOC
- ◆ User-Friendly
- ◆ Durability
- ◆ Quick and Easy Application



◆ **Packing:** 5Ltrs, 20Ltrs

Areas of Application:



SPECIALITY PRODUCTS

PU GROUTING - VHY 500

VHY-500 is a hydrophobic grout based on polyurethane. Upon contact with water, VHY-500 reacts to closed cell rubber like foam while expanding its volume up to 27 times. The cured material is of a constant volume. The reacted material does not shrink or swell.

Recommendation

VHY-500 is a multi-purpose hydrophilic polyurethane injection resin which reacts with available water to initiate expansion in the product to seal leaking cracks and joints in concrete and fill voids in generally inaccessible locations.

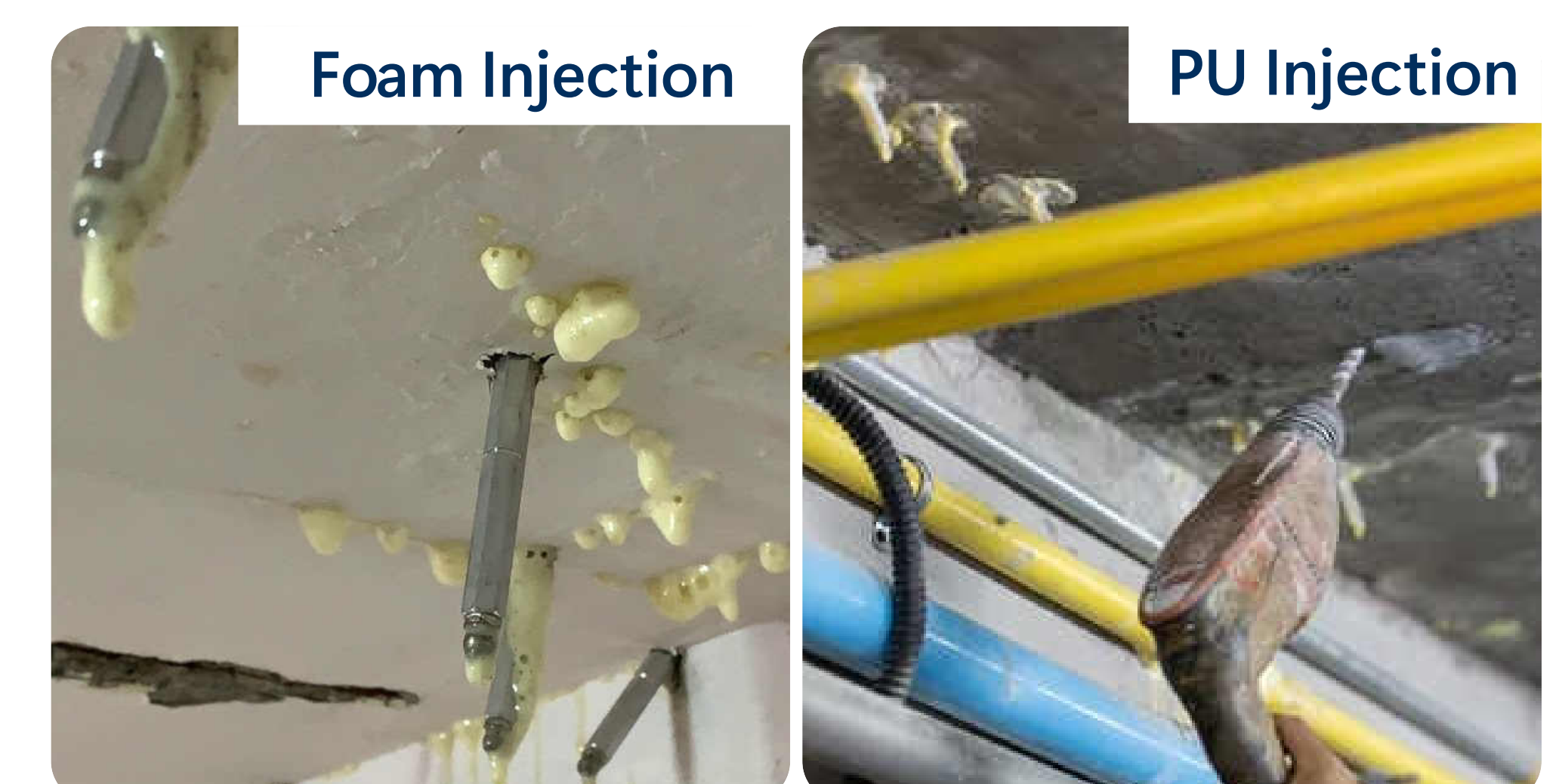
Advantages:

- ◆ Reacts quickly with water to stop any leakages
- ◆ Withstands high hydrostatic pressure
- ◆ Provides excellent adhesion to the surface
- ◆ Allows full penetration in fine cracks
- ◆ Provides high impermeability properties after curing
- ◆ Closed Cell Rubber-like Foam
- ◆ Compatibility with Injection methods



◆ **Packing:** 10 Kg Can

Areas of Application:



INSTANT PLUG

INSTANT Plug is the ideal choice for water stopping mortar. This single - component cement based blend ensures durability by allowing only clean water addition on-site. It is chloride free, designed to prevent high exothermic properties and minimizes thermal cracking for superior performance.

Coverage

5 kg produces approx. 3 liters of mixed product. Yield & coverage may vary slightly depending on the ambient weather and site conditions.



◆ **Packing:** 5 kg Bag

Areas of Application:



SPECIALITY PRODUCTS

COOL BOND

Cool bond roof coating is a cutting-edge solution that leverages the power of advanced UV cross-linkable polymer technology to provide exceptional benefits for your roof. When this innovative coating is subjected to natural sunlight, it triggers a series of UV reactions with the polymers within the formulation.

Coverage

250-500g /m2 per coat depending upon the surface porosity, texture.



Advantages:

- ◆ Crack-bridging properties
- ◆ Simple & Fast application
- ◆ Eco friendly
- ◆ Reduced energy cost
- ◆ Extended Roof Lifespan
- ◆ Weather Resistance
- ◆ Cooling Rebates

◆ **Packing:** 20 Ltrs Bucket

Areas of Application:



CLINO – DEEP CLEAN

Introducing a safe & effective daily cleaner with a neutral pH, perfect for maintaining the beauty of marbles & calcium-based stones. Ideal for use on sealed natural stones, it ensures a sparkling, non-toxic clean while preserving the integrity of your surfaces. Keep your stones looking pristine with ease.

Recommendation

Clino Deep Tile & Floor Cleaner is a high-performance cleaning solution designed to effectively clean and refresh various types of tile and flooring surfaces.



Advantages:

- ◆ Ready to use
- ◆ Fast acting
- ◆ Easy to use
- ◆ Ideal for interior & exterior areas
- ◆ Easy Maintenance
- ◆ Enhanced Durability
- ◆ Versatile Application

◆ **Packing:** 1 Ltr Bottle

Areas of Application:



PRODUCT RECOMMENDATION CHART - APPLICATION-WISE

Area of Application	Description	Product Recommendation	
Internal and External Wall	Plaster	Ready plaster, dubara plaster	
Skim coats	Wall care xpert putty (coarse/fine), Primer Interior, primer exterior, texture		
Area of Application	Description	Product Recommendation	
Surface Preparation-Internal & External Floor	Screed	1. Screed WP 136 2. Screed WP 148	
Internal Floor			
Substrate	Type of Finish	Product System Recommendation	
Internal Cement Floor	Ceramic Tiles	Gold Plus 2315	Gold 1305
	Vitrified Tiles	Platinum 3325	Gold Plus 2315
	Glass Mosaic Tiles -Paper Fased	Platinum Plus 3335	Platinum 3325
Internal - Wood/ Plywood Floor**	Ceramic Tiles & Vitrified Tiles	Platinum 3325 + Tile Admix	Gold Plus 2315+Tile Admix
	All Natural Stones	Platinum Plus 3335 + Tile Admix	Platinum 3325+Tile Admix
	All Engineered Stones	Platinum Plus 3335 + Tile Admix	Platinum 3325+Tile Admix
	Glass Mosaic Tiles - All Types	Platinum Plus 3335 + Tile Admix	Platinum 3325+Tile Admix
	Metal Tiles	Platinum Plus 3335 + Tile Admix	Platinum 3325+Tile Admix
Internal - Metal Floor	Any Tile/ Stone	Platinum Plus 3335 + Tile Admix	Platinum 3325+Tile Admix
External Floor			
External - Concrete/ Cement Floor	Ceramic Tiles/Vitrified Tiles/Glass Mosaic Tiles/ Natural Stones	Platinum Plus 3335	Platinum 3325
	Metal Tiles/Fiber Mesh backed Tile & Stone	Platinum Plus 3335 + Tile Admix	Platinum 3325+Tile Admix
	Engineered Stones	Platinum Plus 3335 + Tile Admix	Platinum 3325+Tile Admix
Internal Floor			
Internal - Concrete/ Plaster Wall	Ceramic Tiles	Platinum 3325	Gold Plus 2315
	Vitrified Tiles	Platinum 3335	Platinum 3325
	Glass Mosaic Tiles - Paper Faced	Platinum Plus 3335 + Tile Admix	Platinum Plus 3335
	Small Format Stones	Platinum Plus 3335 + Tile Admix	Platinum Plus 3335
Internal - Wood/ Plywood Wall*	Ceramic / Vitrified Tiles /Glass Mosaic Tiles	Platinum Plus 3335 + Tile Admix	Platinum Plus 3335
Internal-Gypsum Wall Board Wall/Calcium Silicate Board Wall/Cement Backer Board Wall	Ceramic / Vitrified Tiles / Glass Mosaic Tiles - Paper Faced	Platinum Plus 3335 + Tile Admix	
External Floor			
External - concrete/ plaster wall	Ceramic / Vitrified Tiles / Glass Mosaic Tiles - Paper Faced	Platinum Plus 3335 + Tile Admix	Platinum Plus 3335
	Natural Stones	Platinum Plus 3335 + Tile Admix	Platinum Plus 3335
	Medium Format Stones	Platinum Plus 3335 + Tile Admix	Platinum Plus 3335
GROUTING			
Area of Application	Description	Product Recommendation	
	INTERNAL FLOOR & WALL		
Internal floor/ wall - Residential	Living areas	Vepoxy sp gold/Glitter	USG+Grout Admix
	Bathrooms, kitchen, swimming pool & water bodies	Vepoxy sp gold/Glitter	USG+Grout Admix
	Office rooms, meeting rooms, toilets, cafeterias etc.	Vepoxy sp gold	USG+Grout Admix
		Vepoxy sp gold	USG+Grout Admix
	EXTERNAL FLOOR & WALL		
External Floor/ Wall - Residential	Vepoxy sp gold	USG+Grout Admix	
	WATERPROOFING		
	Bathrooms / Washrooms	Aquabond 2k+Con Repair SBR+Mesh	Con Repair SBR
Residential/ Commercial	Swimming Pools/Plunge Pools/Suspended Pools/ terrace Gardens /Sauna	Aquabond 2k+Con Repair SBR+Mesh	Con Repair SBR
	External Walls	Aquabond 2k+Con Repair SBR+Mesh	Con Repair SBR

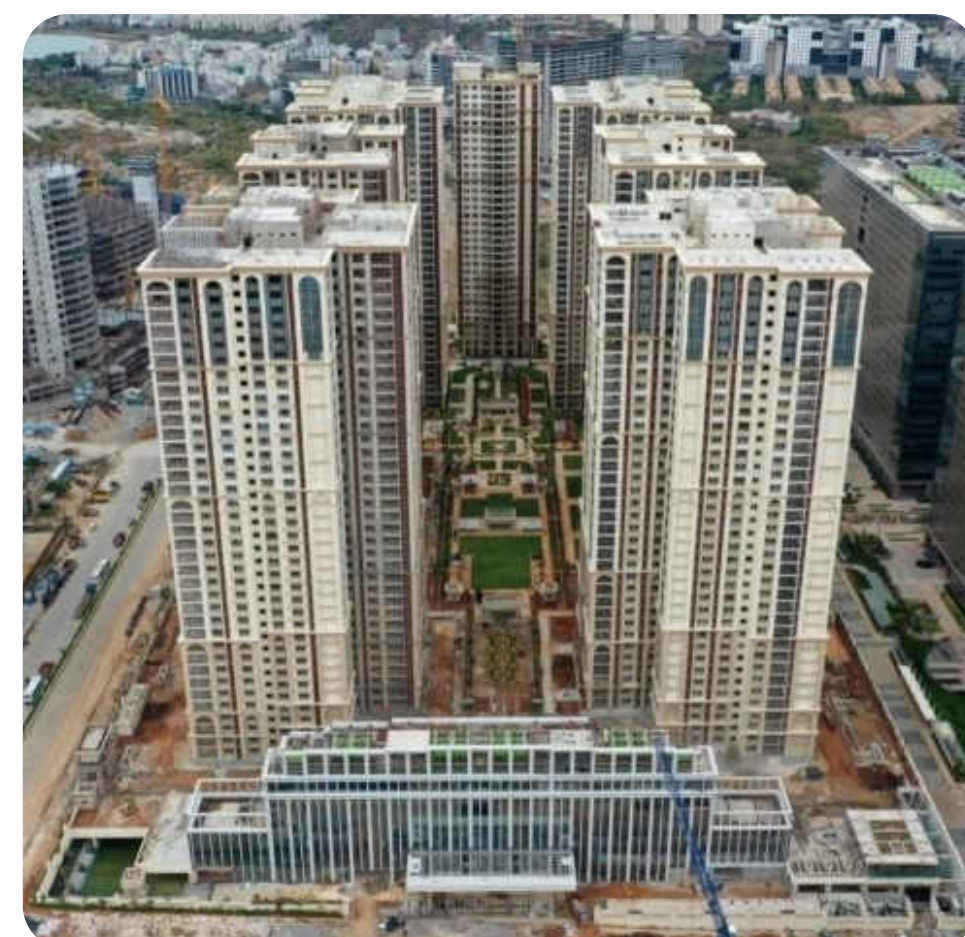
OUR ESTEEMED CLIENTS AND THEIR CONSTRUCTION PROJECTS USING VBOND PRODUCTS

MY HOME TARKSHYA



Kokapet

MY HOME BHOOJA



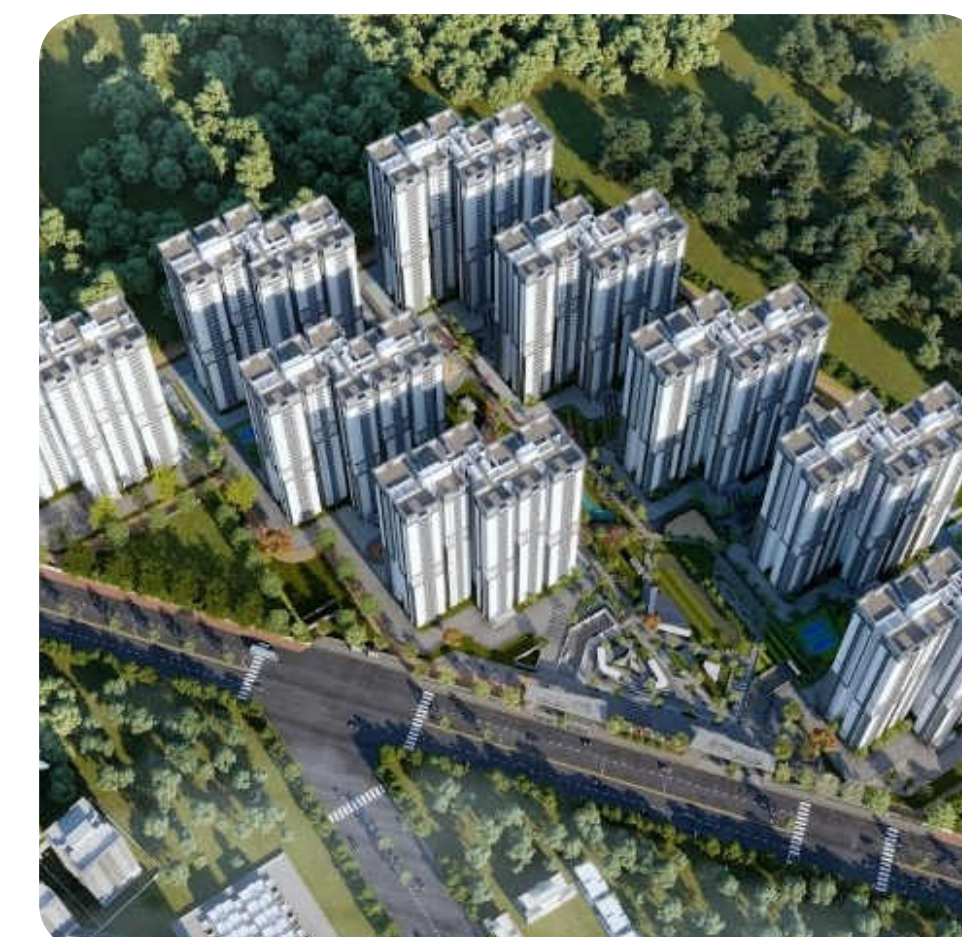
Serilingampally

MY HOME MANGALA



Kondapur

MY HOME TRIDASHA



Ramchandrapuram

ASR INFRA



Patancheruvu

ASHOKA BUILDERS



Kokapet

BL KASHYAP BIO DIVERSITY



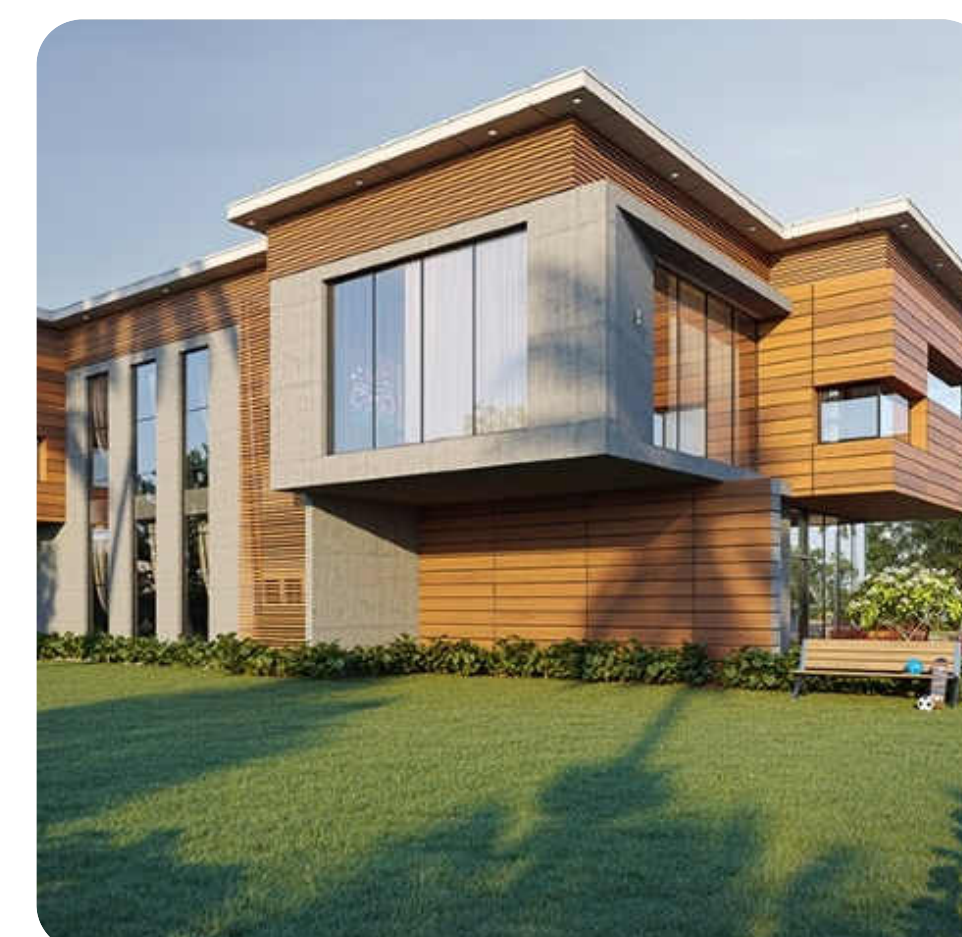
Nanakramguda

GREEN EARTH ENGINEERING



Bahadurpalli

ECO-NEST



Shameerpet

PASIFICA HILLCREST



Hyderabad

FORTUNE CONSTRUCTIONS



Ashok Nagar

MIRCHI DEVELOPERS



Venice City

L&T METRO



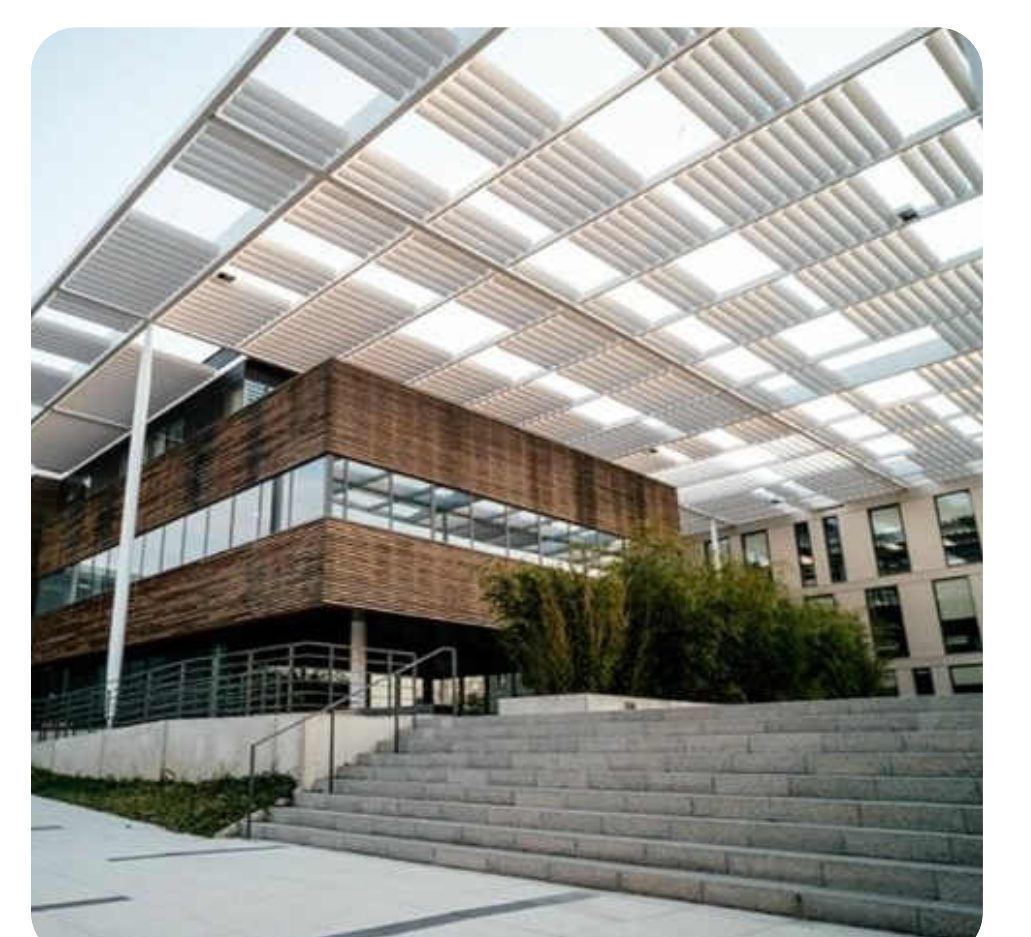
Miyapur

PRADEEP CONSTRUCTIONS



Somajiguda

NPP CONSTRUCTIONS



Nanakramguda

PRAJAY ENGINEERS
SYNDICATE LTD



Shameerpet, Upparpally

PRAJAY ENGINEERS
SYNDICATE LTD



Shameerpet, Turkapally

ZERO MILE WARE HOUSING



Kompally

ANANTHA INFRA



Kapara

SASYA INFRA PROJECTS



Secunderabad

ROBOMATIC



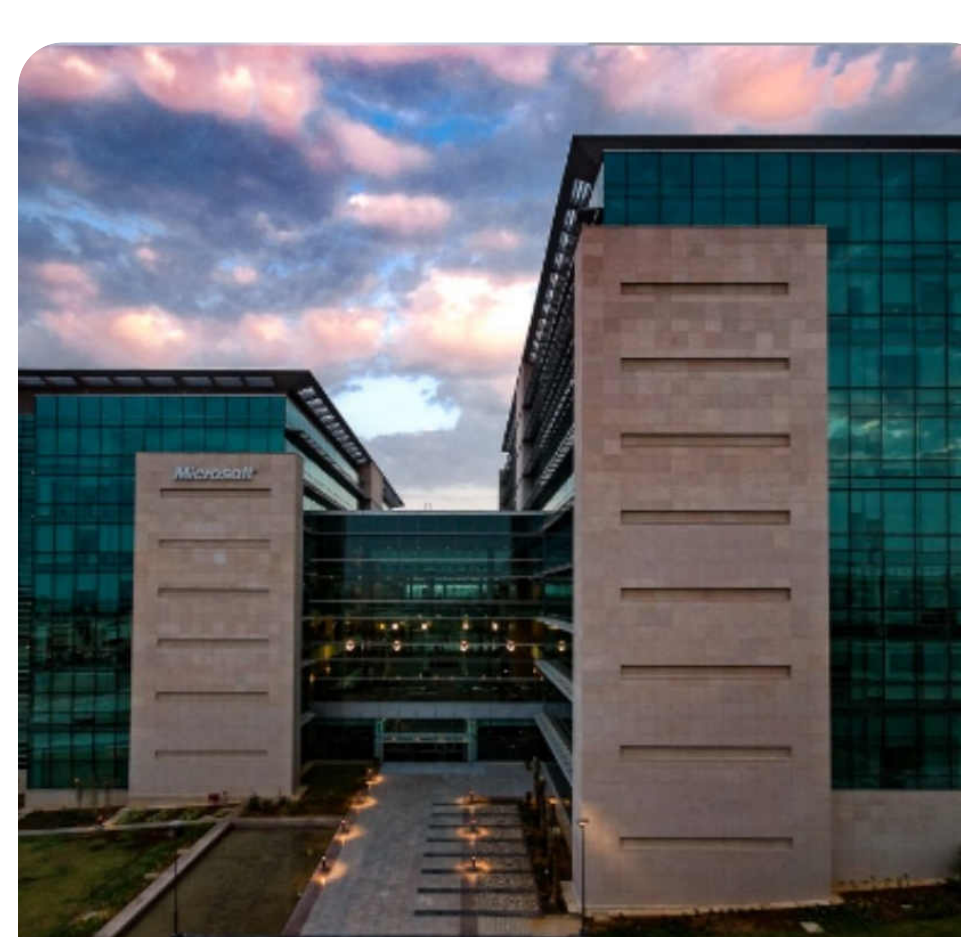
Lemoor

MEENKASHI CONSTRUCTIONS



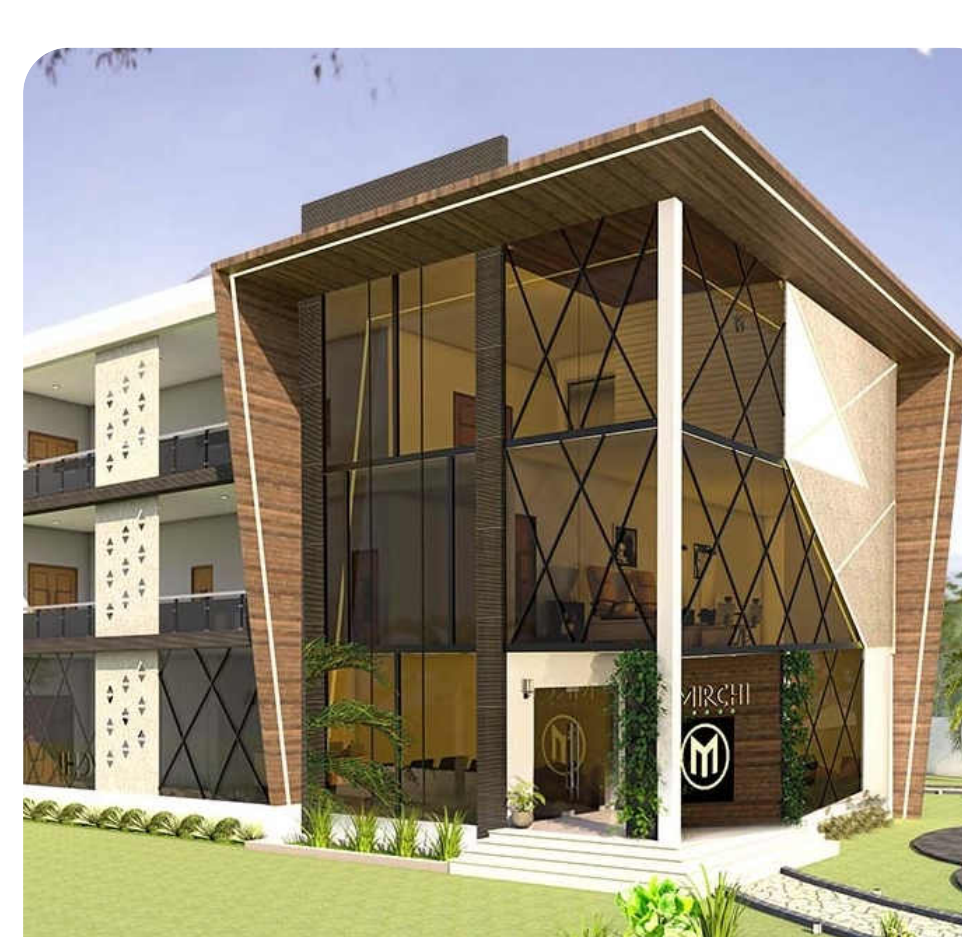
Deloitte Hitec City

WOODKRAFT



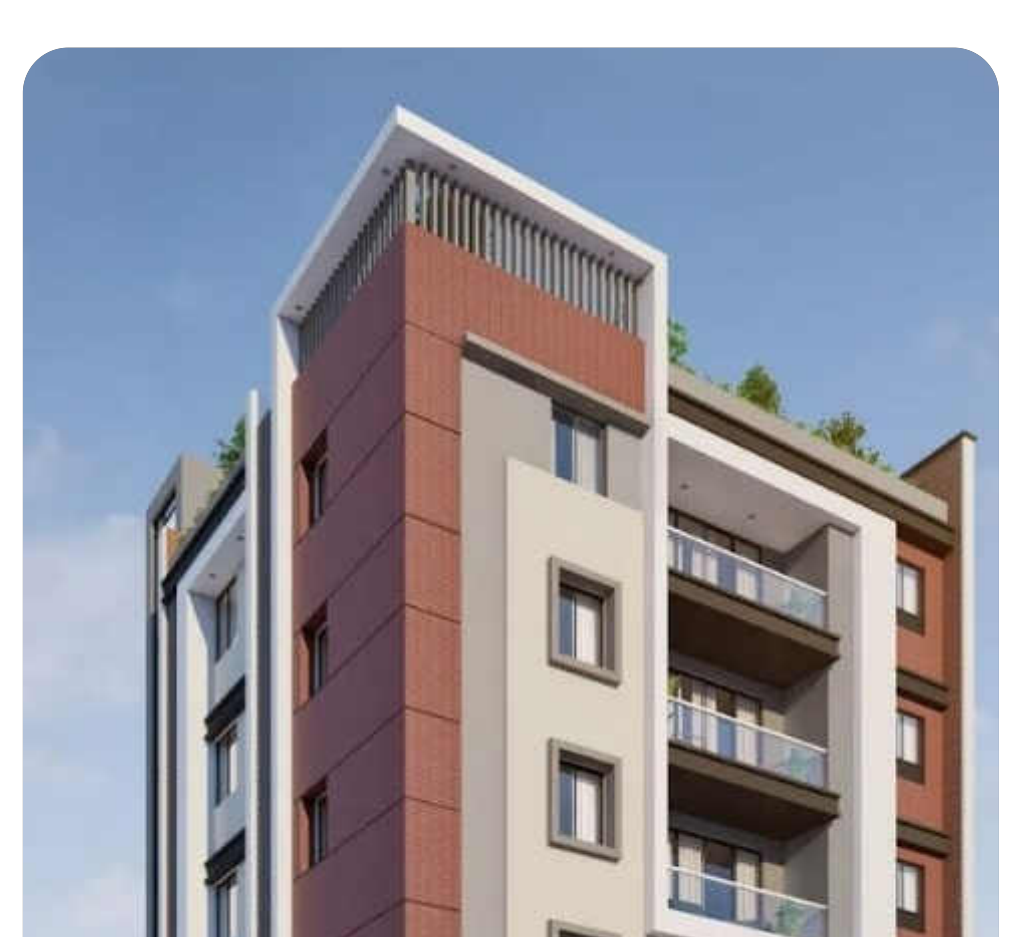
Microsoft Gachibowli

MIRCHI DEVELOPERS



Kollur

HIGH RAISE CONSTRUCTIONS



Saroornagar



VISIT OUR WEBSITE



Manufactured & Marketed by :
VALUE PACK INDIA PRIVATE LIMITED
(AN ISO 9001-2015 CERTIFIED COMPANY)
Regd Office: Unit G4, Ground Floor,
Plot No. 7-6-43/1, SV Landmark, Bollaram
Road Medchal, Hyderabad, Telangana-500090.

Corp Office: Plot No. 217/A, Near Metro Station,
Calvary Temple Road, Miyapur, Hyderabad,
Telangana-500049
Factory: Sy. No. 210 & 211, Near A.P. Met IDA
Bollaram, Sangareddy, Telangana-502 325.
CIN NO: U74999TG2014PTC095270

+91 96664 96664

www.vbond.in